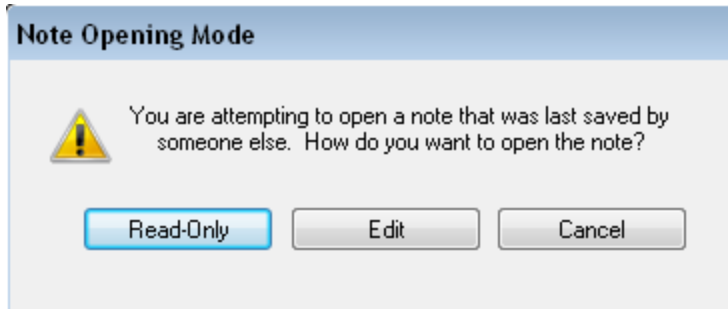


Locked PowerNotes by Nurses

The resident creates a PowerNote and SAVES

The RN goes into same note and receives this message.



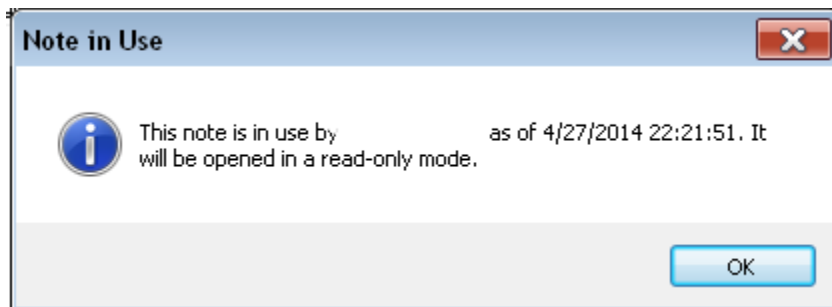
If the RN selects Read-Only it opens the note. Then clicks on the red x to shut the application down. The physician can open without issue.

If the RN selects Edit it opens the note. Then clicks on the red x to shut the application down. The physician can open without issue.

The resident creates a PowerNote and SIGN/SUBMIT and then endorses it.

The RN goes into same note and does NOT receive message.

If the RN double clicks to open note and leave the note without properly closing the note other users will get the alert below.



The nurse must go into the note and OPEN the note

